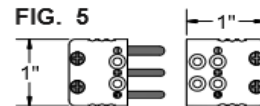
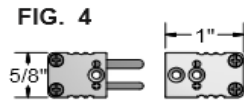
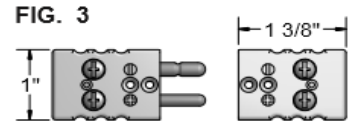
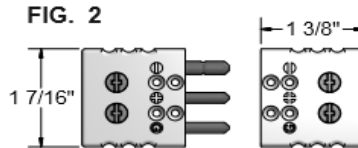
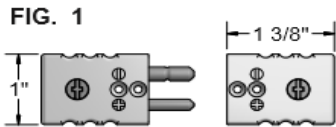


# Thermocouple Plugs, Jacks & Accessories



**EXAMPLE ORDER NUMBER: 81J or 81J-H**

**Standard Plugs**

CODE		DESCRIPTION			
STANDARD PLUGS	STANDARD JACKS	NO. PINS	PIN TYPE	TEMP RATING	FIG. NO.
81 <sup>[1]</sup>	82 <sup>[1]</sup>	2	Hollow	200 °C	1
81U <sup>[1]</sup> - 3	82 <sup>[1]</sup> - 3	3	Hollow	200 °C	2
81 <sup>[1]</sup> - H	82 <sup>[1]</sup> - H	2	Hollow	350 °C	1
<b>2 Pin JAB - In Connectors</b>					
81 <sup>[1]</sup> - J	82 <sup>[1]</sup> - J	14 ga. max		200 °C	3
61K - E	62K - E	8 ga. max		177 °C	3

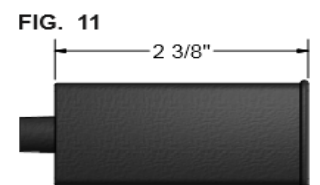
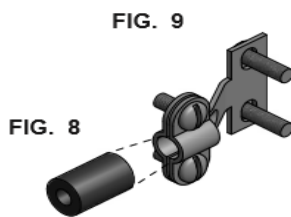
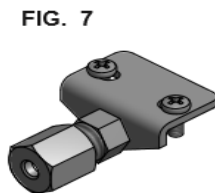
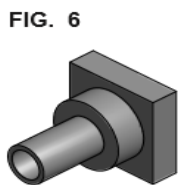
[1] = Insert calibration code J, K, T, E, N, R, S, or U

**EXAMPLE ORDER NUMBER: 84K**

**Miniature Plugs**

CODE		DESCRIPTION		
MINIATURE PLUGS	MINIATURE JACKS	NO. PINS	TEMP RATING	FIG. NO.
83 <sup>[1]</sup>	84 <sup>[1]</sup>	2	200 °C	4
83U <sup>[1]</sup> - 3	84 <sup>[1]</sup> - 3	3	200 °C	5

[1] Insert calibration code J, K, T, E, N, R, S, or U



**EXAMPLE ORDER NUMBER: 8S1 or 8S2-2**

**Mounting Hardware**

CODE	DESCRIPTION	FIG. NO.
8S1	Std. size cable clamp for 200 and 350 °C connectors	9
8S2 - <sup>[1]</sup>	Std. size brass crimp adaptor for 200 and 350 °C connectors	6
8S3 - <sup>[1]</sup>	Std. size compression bracket for 200 and 350 °C connectors	7
8M1	Mini cable clamp	9
8M2 - <sup>[1]</sup>	Mini brass crimp adaptor	6

[1] = Insert tube size code where required 1 = 1/16" 2 = 1/8"  
 3 = 3/16" 4 = 1/4" (1/4" O.D. is not available with mini brass crimp)

**Miscellaneous Hardware**

CODE	DESCRIPTION	FIG. NO.
<b>Standard Connectors</b>		
811	Rubber boot for 200 °C connectors	11
816	Wire grommet for 200 °C connectors	10
629	Cable clamp bushing	8
<b>Miniature Connectors</b>		
821	Wire grommet	10
831	Rubber boot	11
629	Cable clamp bushing	8