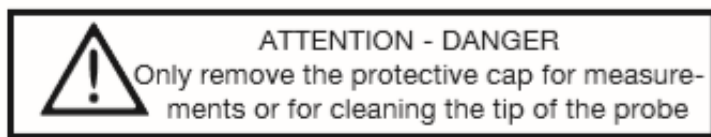


## Frozen Food Probe

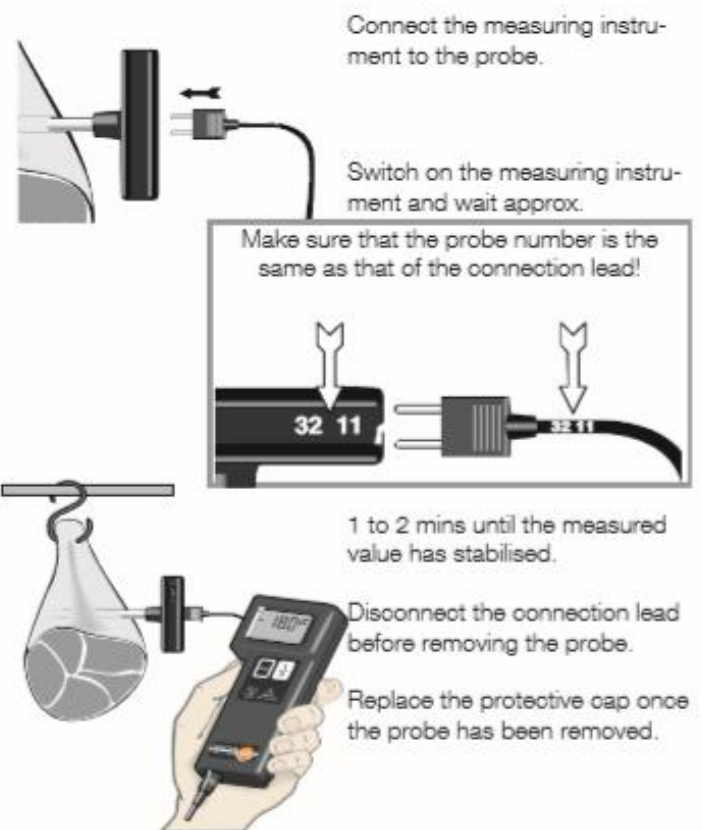
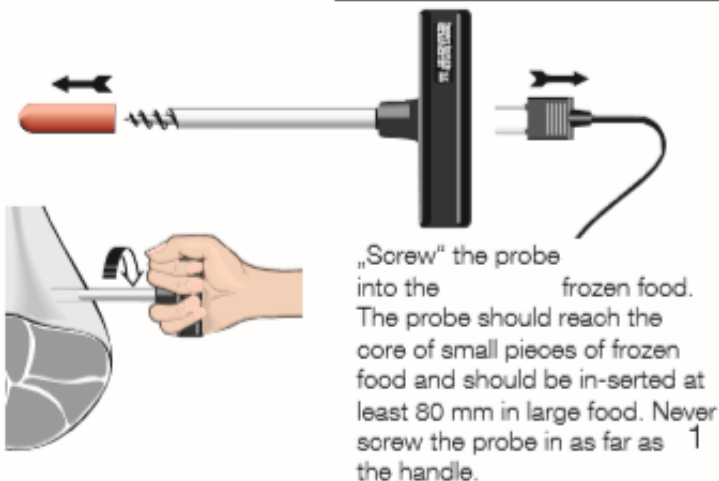
### Product Features:

- Stainless steel tip screws directly into frozen food with no pre-drilling required
- EN 13485 and HACCP-compliant
- Ergonomic, T-shaped handle facilitates drilling
- Includes plug-in wire: 4.9 ft / 1.5 m long; heat-resistant to 176 degrees F / 80 degrees C
- NTC sensor provides high level of accuracy
- Measuring range: -58 to 284 degrees F (-50 to 140 degrees C)
- Long-term measurements up to 257 degrees F (125 degrees C)
- Reaction time: 20 seconds
- Probe shaft tip diameter: 0.16 in. (4 mm)
- Probe shaft tip length: 1.18 in. (30 mm)
- Probe shaft diameter: 0.3 in. (8 mm)
- Probe shaft length: 4.33 in. (110 mm)



Remove the protective cap and plug from the frozen food probe.

Do not pull on the lead when removing the plug!



# Frozen Food Probe

## General features



### Temperature resistance

Connection lead: -50 to +80°C  
Handle: -50 to +100°C  
short-term to +140°C

Probe tip: see meas. range

**Cleaning:**  
The probe can be cleaned with the usual disinfectants (dilute solution to 10%). Do not use disinfectants with an active chlorine base.

It is possible to boil the probe and put it in the dishwasher.

**Contact with food stuffs:**  
Should the plastic handle of the probe come into contact with the food, the temperature of the food should not exceed + 50 °C. The plastic handle is not suitable for applications in alcohol.

The measuring tip is made of stainless steel.

3

## Technical data

Meas. range: NTC probe  
0613.3211 -50 to +140°C  
0611 bzw. 0614.3211 -50 to +140°C  
Certified range: -25 to +120°C  
 $t_{90} = 8 \text{ sec}$   
(measured in moving liquid)

Accuracy: -25 to +40°C  $\pm 0,2^\circ\text{C}$   
> +40...+80 °C  $\pm 0,4^\circ\text{C}$   
>+80...+120 °C  $\pm 0,6^\circ\text{C}$   
< -25°C  $\pm 0,7^\circ\text{C}$

Measuring range: Pt100 probe  
-100 to +400°C  
 $t_{90} = 15 \text{ sec}$   
(measured in moving liquid)

Accuracy: DIN IEC 751 class A  
( $\pm 0.15 + 0.002 \times \text{tl}$ ) °C

## Ordering data

Frozen food probe	NTC.....	0613.3211
	NTC (without certificate).....	0614.3211
	NTC (with certificate).	0611.3211
	PT100 .....	0609.3272

4